

Director’s Notes

George Seurat spent two years between the ages of 24-26 working on his masterpiece “A Sunday Afternoon On The Island of La Grande Jatte”. He sketched in the park everyday and did a multitude of drawings, studies and at least 3 large canvases. He sketched by day and painted at night by light of a lantern. He was sometimes bullied in the park and more than once had his papers destroyed by some of the tougher boys he was drawing. Because the painting was not well received he went back to it 3 years after its completion restretched the canvas, painted a border, built a special white frame so that people's eyes could see it properly. It took 30 years before it was embraced by the public but of course he wasn't around to see that happen as he had died at age 31.

In the play George Seurat says about his great painting "I just want it to be seen" which is the great cry of all artists especially those of us in live theatre because it is so painfully temporary. The fact that you are here in the theatre means you are a now part of it and brings us all closer to something that shimmers just outside the ordinary, like dots of coloured light like notes next to notes on a piano. Thank you for being here.

- Sue Miner

The services of Sue Miner by special permission of Canadian Actors’ Equity Association.

Still photos, videotaping or any other type of recording of this production is strictly prohibited.

- ♦ Act One takes place over a series of Sundays between 1884 -1886

<u>Sunday In The Park With George</u>	Dot
<u>No Life</u>	Jules, Yvonne
<u>Color and Light</u>	Dot, George
<u>Gossip</u>	Celeste # 1, Celeste # 2, Boatman, Nurse, Old Lady, Jules, Yvonne
<u>The Day Off</u>	George, Nurse, Franz, Frieda, Boatman, Soldier, Celeste # 1, Celeste # 2, Yvonne, Louise, Jules, Louis
<u>Everybody Loves Jules</u>	Dot
<u>Finishing The Hat</u>	George
<u>We Do Not Belong Together</u>	Dot, George
<u>Beautiful</u>	Old Lady, George
<u>Sunday</u>	Company

- ♦ Act Two takes place in 1984

<u>It’s Hot Up Here</u>	Company
<u>Chromolume # 7</u>	George, Marie
<u>Putting It Together</u>	George, Company
<u>Children And Art</u>	Marie
<u>Lesson # 8</u>	George
<u>Move On</u>	George, Dot
<u>Sunday</u>	Company

CAST in alphabetical order

Louis, Lee Randolph.....	Brandon Antonio
Nurse, Mrs., Greenberg’s Assistant.....	Georgia Bennett
Soldier, Billy Webster.....	Jonathan Gysbers
Frieda, Harriet Pawling.....	Nicola Hadjis
Dot, Marie.....	Arinea Hermans
Celeste #2, Elaine.....	Jacqueline Janas
George.....	Cameron Kneteman
Louise, Naomi Eisen.....	Hailey Lewis
Yvonne, Deborah.....	Blaire Lorrison
Boatman, Alex.....	Ruaridh MacDonald
Horn Player, Waiter.....	Alex Panneton
Franz, Dennis.....	Ben Plunkett
Jules, Bob Greenberg.....	Micah Richardson
Old Lady, Blair Daniels.....	Ainsley Roy
Mr.,bather, Charles Redmond.....	Brandon Roy
Silent Soldier, bather, Waiter.....	Kayden Tonita
Celeste # 1, Betty.....	Amanda Trapp

Assistant Director: Nicola Hadjis
Assistant Music Director: Tyler Check
Chromolume Music Programmed by Tyler Check
Flugelhorn & Keyboard: Alex Panneton
Keyboard: Amanda Trapp
“Everybody Loves Louis” Choreography by Nicola Hadjis & Ainsley Roy

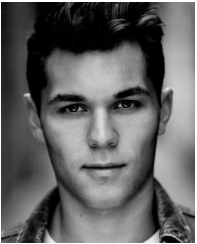
Stage Management Mentor: Jan Munroe



Brandon Antonio



Georgia Bennett



Jonathan Gysbers



Nicola Hadjis



Arinea Hermans



Jacqueline Janas



Cameron Kneteman



Hailey Lewis



Blaire Lorrison



Ruaridh MacDonald



Alex Panneton



Ben Plunkett



Micah Richardson



Ainsley Roy



Brandon Roy



Kayden Tonita



Amanda Trapp

TECHNICAL CREW

Stage Manager.....Victoria VanDenBelt

Assistant Stage Managers.....Emily LaRose, Emie Sabandal

Audio Crew.....Stephen Downey, Corey Cohen

Carpentry Crew.....Evan Brown, Ryan LePage, Nicola Murch, Erin Ocampo, Alex Pickles, Stephen Pike, Brennan Priebe, Robert Spithoff

Head Lighting Technician.....Ashley Lindsay

Lighting Crew.....Matthew Blackwood, Matthew Couchman, Abigail Decaire, David Draper, Daniel Gignac, Callum Grant, Amanda-Lee Jull, David Petrella, Emma Westcott

Properties Crew.....Carolyn Brennan, Carlie Dugan, Tomas Hiseler, Jen Johnston, Laurel Lanaway, William Leone, Gabriel Mazza, Tillie Morgan, Peter Pharand, Loralie Pollard, Emily Whalley, Abby Wilson-Campbell

Scenic Paint Crew.....Chase Benedict, Kaitlynn Freeth, Haley Helm, Daniel Jakobi, Stefanie Lorette, Tara McNeil, Holly Rundle, Mason Soares

Wardrobe Crew.....Maya Bowers, Brayden Crawford, Jasper Jacobs, Maddie McCullough, Connor Millar, Evelyn Pageau, Mitchell Paisley, Rehianna Rothwell, Kathryn Urbanek

Assistant Technical Directors.....Mat Armstong, Jessy Stephens, Sarah Young

Technical Assistants.....Connor Haley, Grant Quinn, Mary Reddon

Production Assistants.....Kathleen Fitz-Gerald, Nicole Fontes, Emma Knapp, Emma Westcott

Running Crew

Projections.....Jeff Pybus

Lighting Board Operator.....Daniel Gignac

Stagehands.....Ashley Lindsay, Tillie Morgan

Wardrobe Dressers.....Connor Millar, Evelyn Pageau

Wig Dresser.....Kathleen Fitz-Gerald

Theatre Sheridan

Sunday in The Park With George



Music and Lyrics by **Stephen Sondheim**
Book by **James Lapine**

Originally Directed on Broadway by James Lapine
Originally Produced on Broadway by The Shubert Organization and Emanuel Azenberg
By arrangement with Playwrights Horizon, Inc. New York City, which produced the original production of “Sunday in The Park With George” in 1983.

Director: **Sue Miner**
Music Director: **Adam White**
Set Designer: **Denise Lisson**
Costume Designer: **Barbara Rowe**
Lighting Designer: **Steve Lucas**
Projection Designer: **Jeff Pybus**