

Sheridan College

## SOURCE: Sheridan Institutional Repository

---

Resources

Centre for Equity and Inclusion

---

4-2021

### Insights and Strategies to Support Students with Autism Spectrum Disorder - Poster

Suzyo Suman Bavi

*Sheridan College*, [suzyo.bavi@sheridancollege.ca](mailto:suzyo.bavi@sheridancollege.ca)

Janice Fennell

*Sheridan College*, [janice.fennell@sheridancollege.ca](mailto:janice.fennell@sheridancollege.ca)

Janice Galloway

*Sheridan College*, [janice.galloway@sheridancollege.ca](mailto:janice.galloway@sheridancollege.ca)

Centre for Equity and Inclusion

*Sheridan College*, [equity@sheridancollege.ca](mailto:equity@sheridancollege.ca)

Follow this and additional works at: [https://source.sheridancollege.ca/cei\\_resources](https://source.sheridancollege.ca/cei_resources)



Part of the [Accessibility Commons](#)

---

#### SOURCE Citation

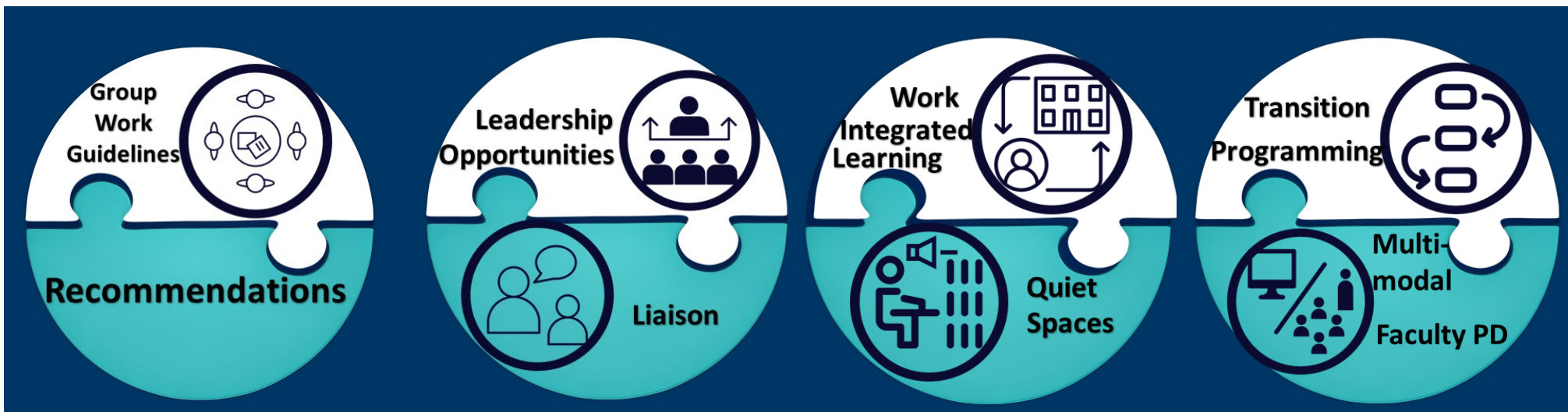
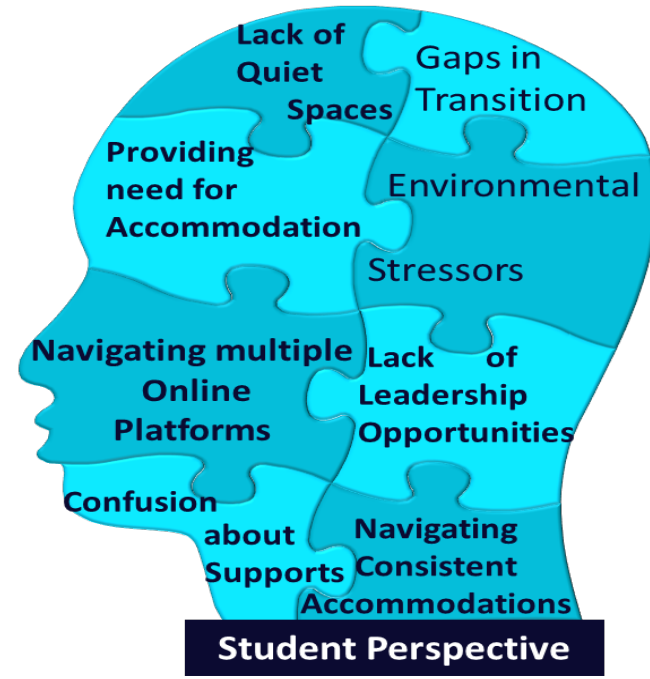
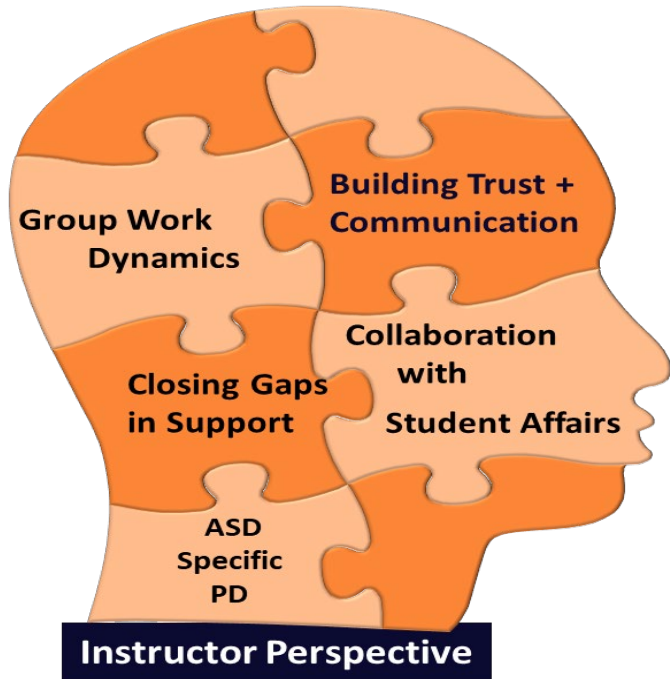
Bavi, Suzyo Suman; Fennell, Janice; Galloway, Janice; and Centre for Equity and Inclusion, "Insights and Strategies to Support Students with Autism Spectrum Disorder - Poster" (2021). *Resources*. 15.

[https://source.sheridancollege.ca/cei\\_resources/15](https://source.sheridancollege.ca/cei_resources/15)



This work is licensed under a [Creative Commons Attribution-NonCommercial-No Derivative Works 4.0 License](#).

This Poster is brought to you for free and open access by the Centre for Equity and Inclusion at SOURCE: Sheridan Institutional Repository. It has been accepted for inclusion in Resources by an authorized administrator of SOURCE: Sheridan Institutional Repository. For more information, please contact [source@sheridancollege.ca](mailto:source@sheridancollege.ca).



Group Work Guidelines

Leadership Opportunities

Work Integrated Learning

Transition Programming

Recommendations

Liaison

Quiet Spaces

Multi-modal Faculty PD