

## DIRECTOR NOTES

When I was asked to come to Sheridan and direct *Grease*, images of the well known movie and many stage productions flashed through my head, and I thought it would be easy work to throw up another version of this perhaps overly familiar musical. Then I learned that we were to mount the original, Broadway version of the play, without any of the added stuff from the movie – stuff that often is added to stage productions these days. I wondered what there actually was in the original. Why was the play rarely done in its original form? After all, it was a hit when it made its debut.

Well, once I studied the script with a fresh eye, I recognized that what we had to work with was not only a genuine tribute to 1959, but also a sweet story about a group of fast friends coming of age, and that the only honest way to approach the work was without the added layers of nostalgia that it has collected since it was first produced in 1972. In consultation with the Designers, the Choreographer and Musical Director, we decided to “go hard” for the period and the style. You’ll see that approach in the colours and shapes on stage, the unabashed period style dance, the singing in the style of the popular music of the day, and, I hope, in an honest, heartfelt story told on stage without the cynicism of our current age.

One of the greatest pleasures of working on this project has been to watch these young, talented musical theatre actors leave their very modern selves behind and lose themselves in a time before iPods, Facebook, cell phones and (can you believe it?) colour tv! For them, this show is not about nostalgia – they have no experience of the 1950’s – but simply the story of the kids of Rydell High.

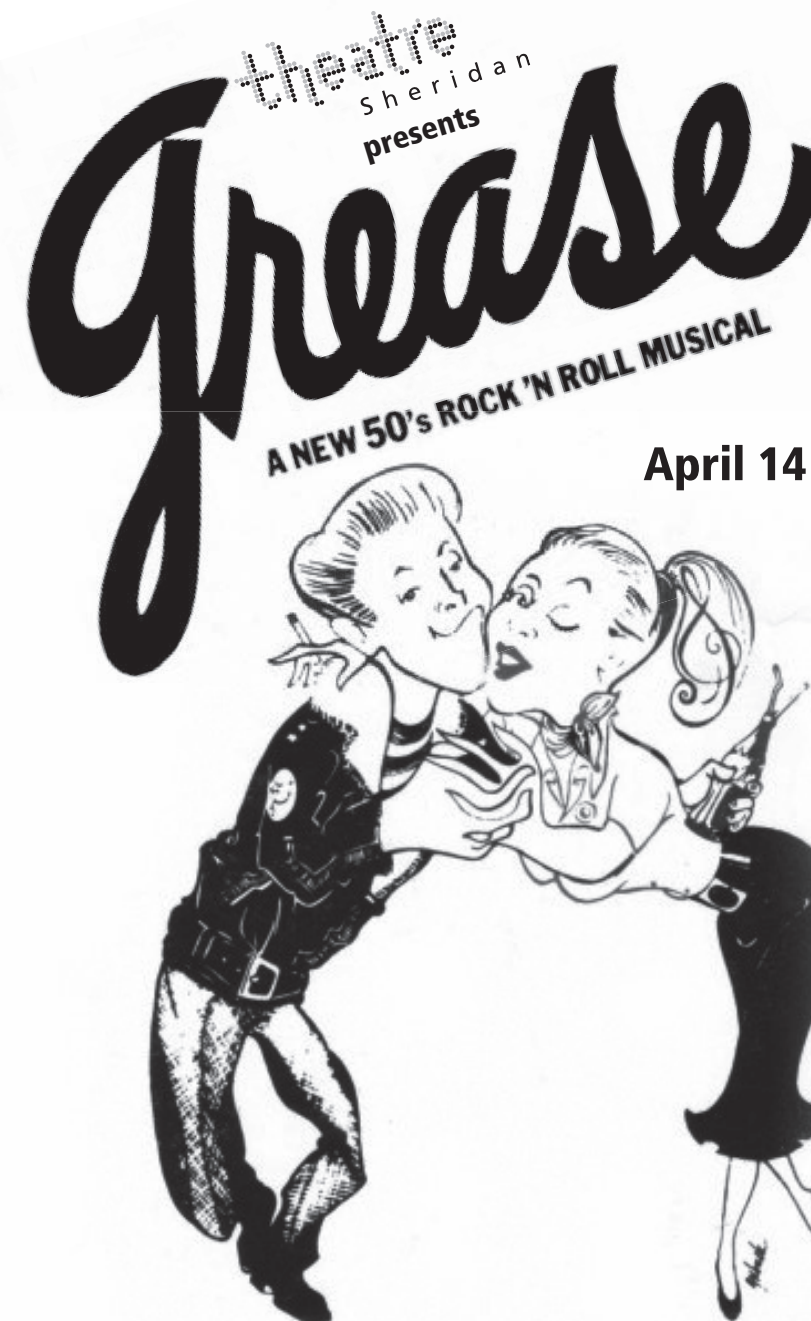
- Geoffrey Whynot

## TECHNICAL CREW

Stage Manager .....	Dana Paul
Assistant Stage Managers .....	Lucas Park, Keely Welsh
Audio Crew .....	Jeanette Bell, Jeff Bornstein, Bill Chabassol, Ryan Holliday, Ethan Millard
Carpentry Crew.....	Brett Brocoy, Chris Fox, Han Won Kyoony, Kerry Mountfield, ..... Div Padhiar, Natalie Tsang, Kevin Reynolds, Johnny Woo
Head Electrician .....	James Ankers
Lighting Crew .....	Laura Grandfield, Skylar Hillier, Stacey Ingham, Nick Mitanooff, Virginia Morrow, Sabrina Pawling, Katherina Sokyrko, Mike Venner, Lucas Wilson
Production Assistants .....	Danielle Demeny, Derek Wray
Properties Crew .....	Rebecca Berg, David Butler, Casey Crawford, Russell Joyce, Mitcheal Lonsdale, Chelsea Mannik, Diana Stephens, Daniel Van Amelsvoort
Scenic Paint Crew .....	Amelia Berzins, Jessica Bishop, Carolyn Borer, Danielle Couture, Catherine Smulders, Josh Van Dijk, Lisa Young
Wardrobe Crew.....	Andrew Bravener, Melissa Cameron, Carla Emmaneel, Alyson Hiller, Rhiannon Jones, Caitlyn Quammie, Jordan Rutherford, Katherine Theriault
Technical Assistants .....	Kevin Boriel, Sean Free

## RUNNING CREW

Crew Chief .....	Natalie Tsang
Live Mix.....	Jeff Bornstein
Lighting Board Operator.....	Mike Venner
Audio Playback.....	Bill Chabassol
Stage Hands .....	Skylar Hillier, Mitcheal Lonsdale, Derek Wray
Deck Audio .....	Ethan Millard, Lisa Young
Follow Spots .....	Laura Grandfield, Lucas Wilson
Dressers.....	Caitlyn Quammie, Katherine Theriault



Book, Music  
and Lyrics by  
Jim Jacobs and  
Warren Casey

The services of Geoffrey Whynot and Liz Gilroy by special permission of Canadian Actors' Equity Association.

THE  
**Great-West Life**  
ASSURANCE COMPANY

London  
Life

Sheridan

STRONGER COMMUNITIES TOGETHER™

Director  
**Geoffrey Whynot**

Set Designer  
**Dennis Horn**

Choreographer  
**Liz Gilroy**

Costume Designer  
**David Juby**

Musical Director  
**Christopher Munteer**

Lighting Designer  
**Sandra Marcroft**

Music Production  
**Alan Poaps**

Sound Designer  
**Todd Charlton**

## CAST



Al Braatz



Alex Fiddes



Andrea O'Brien



Anna Hurshman



Christa Clahane



Daniel Birnbaum



Daniel Greenberg



Esther Huh\*



Iain Stewart



Janelle Gallant



Jen Shaw\*\*



Jeremy Wells



Jonathan Cullen



Judy Kovacs



Kelly Boaz



Lili Connor



Linnea Currie-Roberts



Marie-Claude Sarault



Miranda Jary



Miranda MacDonald



Nicole Power



Pako Arizmendi



Rebecca Peters



Shannon Coulter



Tess Bengner



Vaughn Harris



Aaron Sax



Oliver Bailey

\*Assistant Director  
\*\*Dance Captain

## CAST (CONT'D)

Danny Zuko ..... Daniel Greenberg  
Sandy Dumbrowski ..... Tess Bengner  
Anna Hurshman

### PINK LADIES

Jan ..... Miranda MacDonald  
Betty Rizzo ..... Kelly Boaz  
Rebecca Peters  
Frenchy ..... Shannon Coulter  
Marty ..... Marie-Claude Sarault

### BURGER PALACE BOYS

Kenickie ..... Alex Fiddes  
Doody ..... Pako Arizmendi  
Sonny Latierra ..... Vaughn Harris  
Roger ..... Daniel Birnbaum

Miss Lynch ..... Esther Huh  
Patty Simcox ..... Christa Clahane  
Vince Fontaine ..... Jon Cullen  
Cha-Cha Di Gregorio & Radio Voice ..... Lili Connor  
Teen Angel ..... Oliver Bailey  
Johnny Casino ..... Oliver Bailey  
Eugene Florczyk ..... Jeremy Wells  
Janitor ..... Al Braatz  
Male Film Voice ..... Aaron Sax  
Female Film Voice ..... Linnea Currie-Roberts  
Scientist Film Voice ..... Geoff Whynot

### LYNCH CLONES

Linnea Currie-Roberts, Janelle Gallant, Jen Shaw

### ANGELETTES

Miranda Jary, Judy Kovacs, Andrea O'Brien, Nicole Power

### ENSEMBLE

Al Braatz, Miranda Jary, Judy Kovacs, Andrea O'Brien, Nicole Power, Aaron Sax, Iain Stewart

### MUSICIANS

Andy Ballantyne ..... Alto Flute  
Al Cross ..... Percussion  
Russ Boswell ..... Bass  
John MacMurchy ..... Horns  
David Gray ..... Guitar

## SCENES AND MUSICAL NUMBERS

### ACT ONE

#### REUNION

"Alma Mater" ..... Miss Lynch, Patty, Eugene & Company  
"Alma Mater" ..... Burger Palace Boys

#### CAFETERIA and SCHOOL STEPS

"Summer Nights" ..... Sandy and Danny, Pink Ladies, Burger Palace Boys and Patty  
"Those Magic Changes" ..... Doody, Burger Palace Boys

#### PAJAMA PARTY

"Freddy, My Love" ..... Marty, and Pink Ladies

#### STREET CORNER

"Greased Lightnin'" ..... Kenickie, and Burger Palace Boys

#### SCHOOLYARD PARK

"Mooning" ..... Roger and Jan  
"Look at Me, I'm Sandra Dee" ..... Rizzo  
"We Go Together" ..... Pink Ladies and Burger Palace Boys

### ACT TWO

#### SCHOOL GYM

"Shakin' at the High School Hop" ..... Entire Company  
"It's Raining on Prom Night" ..... Sandy and Radio Voice  
"Born to Hand-Jive" ..... Johnny Casino and Company

#### BURGER PALACE

"Beauty School Dropout" ..... Teen Angel, Frenchy and Angelettes

#### DRIVE-IN-MOVIE

"Alone at a Drive-in Movie" ..... Danny and Burger Palace Boys

#### JAN'S PARTY

"Rock 'N' Roll Party Queen" ..... Doody, Roger and Sonny  
"There Are Worse Things I Could Do" ..... Rizzo  
"Look at Me, I'm Sandra Dee" Reprise ..... Sandy

#### INSIDE BURGER PALACE

"All Choked Up" ..... Sandy and Danny, Pink Ladies, Burger Palace Boys, Eugene and Patty

#### FINALE

"We Go Together" Reprise ..... Entire Company