

TECHNICAL CREW

<i>Stage Manager</i>	<i>Neha Ross</i>
<i>Assistant Stage Managers</i>	<i>Melissa Cameron, Ben Murduff</i>
<i>Audio Crew</i>	<i>Holly Dance, Mack Flynn, Jessie Jeffery</i>
<i>Carpentry Crew</i>	<i>David Butler, Stephanie Colvin, Won Kyoon Han, Russell Joyce, Brian Liska, Kerry Mounfield, Diviesh Padhar, Tyler Patterson,</i>
<i>Head Electrician</i>	<i>Evan Ossington</i>
<i>Lighting Crew</i>	<i>James Ankers, Kevin Boriel, Michael Cordeau, Stefanie Curran, Sabrina Pawling</i>
<i>Production Assistants</i>	<i>Ryan Holliday, Justina Pabritsaite</i>
<i>Properties Crew</i>	<i>Carolyn Borer, Stephanie Chalmers, Casey Crawford, Courtney Hayes, Rhiannon Jones, Mike Venner</i>
<i>Scenic Paint Crew</i>	<i>Amelia Berzins, Patricia Emerson, Alex Kerr, Dana Paul, Natalie Tsang, Joshua Van Dijk, Andrea Willette</i>
<i>Wardrobe Crew</i>	<i>Jeff Bornstein, Lindsay Code, Melinda Dempster, Chris Fox, Alyson Hiller, Diana Luce, Virginia Morrow, Sarah Scholl, Diana Stephens</i>
<i>Technical Assistant</i>	<i>Jonathan Fair</i>

RUNNING CREW

<i>Crew Chief</i>	<i>Tyler Patterson</i>
<i>Live Mix</i>	<i>Mack Flynn</i>
<i>Lighting Board Operator</i>	<i>Evan Ossington</i>
<i>Audio Playback</i>	<i>Jessie Jeffery</i>
<i>Stage Hands</i>	<i>David Butler, Ryan Holliday, Won Kyoon Han, Russell Joyce, Diviesh Padhar, Mike Venner</i>
<i>Deck Audio</i>	<i>Bill Chabassol, Natalie Tsang</i>
<i>Deck LX</i>	<i>Michael Cordeau</i>
<i>Follow Spots</i>	<i>Kevin Boriel, Sabrina Pawling</i>
<i>Dressers</i>	<i>Alyson Hiller, Diana Stephens</i>

Special Thanks to The Shaw Festival.



Theatre Sheridan Presents

GYPSY

*Book by Arthur Laurents
Music by Jule Styne
Lyrics by Stephen Sondheim*

*Based on the Memoirs of
Gypsy Rose Lee*

February 12 – 23, 2008

Directors

Marie Baron & Terry Tweed

Musical Director

Lona Davis

Choreographer

Stephen Findlay

Set Designer

Jackie Chau

Costume Designer

David Juby

Lighting Designer

Jeff Logue

Sound Designer

Todd Charlton

Musicians

Lona Davis..... *Conductor / Piano*

Bob DiSalle..... *Drums*

Greg Gibson..... *Keyboards*

Jack McFadden *Bass*



DIRECTOR'S NOTES

Although the full title of the 1959 musical is *Gypsy: A Musical Fable*, the world knows it simply as *Gypsy*. And *Gypsy* is the one and only *Gypsy* Rose Lee, the famous burlesque stripper. Loosely based on the 1957 memoirs of Lee, it charts her journey from her early days in vaudeville when she played second banana to her sister, to the heady moment when she becomes the highest paid striptease artist in the business. The catalyst and driving force behind *Gypsy's* transformation is Mama Rose, the quintessential stage mother. Overbearing, both loving and ruthless, and driven by a need to succeed – whatever the cost -- the musical follows her dreams and efforts to raise her two daughters June and Louise to be “stars”. The character of Louise is based on Lee, and the character of June is based on Lee's sister, the actress June Havoc. At the same time as *Gypsy* examines the unpredictable and never easy relationship between mothers and daughters, it also casts an affectionate eye on the joys and difficulties of life in American show business during the 20's and early 30's.

Directed by Jerome Robbins, the original production opened at the Broadway Theatre in 1959, with Sandra Church as *Gypsy* and Ethel Merman giving the performance of her life as Mama Rose. Although the production closed in 1961, *Gypsy* has never been out of the spotlight for long. It was made into a motion picture starring Natalie Wood and Rosalind Russell in 1963. The first Broadway revival was in 1974, this time with Zan Charisse playing *Gypsy* and Angela Lansbury taking on the role of Mama Rose. The second was in 1989, made memorable by the presence of Crista Moore and Tyne Daly, and a third was mounted in 2003 with Tammy Blanchard and Bernadette Peters. But New York is not the only city where Miss Lee has graced the stage. From the moment the original productions closed, she has continued to strut her stuff in cities and in companies, both big and small, all over the world. So perhaps it was inevitable, that she has found her way here to us tonight. Ladies and Gentlemen, Sheridan Institute is proud to present the brightest jewel in the burlesque crown – Miss *Gypsy* Rose Lee!

ACT II

Scene 1 – Desert Country, Texas

Toreadorables Louise, Marjorie May, Edna, Dolores,
Gail, Agnes, Thelma

Together Wherever We Go Rose, Louise, Herbie

Scene 2 – Backstage of a Burlesque House, Withita

You Gotta Get a Gimmick Mazeppa, Tessie Tura, Electra

Scene 3 – Backstage Corridor

Scene 4 – Backstage and On Stage: Withita, Detroit, Philadelphia, Minsky's

Small World (Reprise) Rose

Gypsy's Strip Sequence Louise and Showgirls

Scene 5 – Louise's Dressing Room

Scene 6 – Backstage After the Show

Rose's Turn Rose

CAST & CHARACTERS



Thomas
Alderson

Kathryn
Ballantine



Tess
Bengler



Daniel
Birnbaum



Kendra
Braun

Jen
Budgell

Stacey
Bulmer



Leah
Cogan



Lise
Cormier



Romina
Cortina



Caleb
Cosman

Shannon
Coulter



Katie
Edwards



Kate
Etienne



Alex
Fiddes



Janelle
Gallant



Caitlin
Goguen*



Anna
Hurshman



Kayla
James



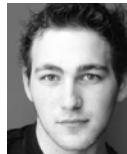
Ryan
Jeffrey



Jeremy
Lapalme



Colin
Lepage



A.J.
Lopresti



Lucas
Meeuse



Rebecca
Peters



Erika
Santillana



Johnny
Simeonakis



Jennifer
Smardenkas



Alicia
Toner



Nick
Visscher

MUSICAL NUMBERS

ACT I

Overture Full Company

Scene 1 – Vaudeville Theatre Stage, Seattle

Let Me Entertain You Baby June, Baby Louise

Scene 2 – Kitchen of a Frame House, Seattle

Some People Rose

Scene 3 – Road Between Seattle and Los Angeles

Some People (Reprise)..... Rose

Scene 4 – Backstage of a Vaudeville Theatre House, Dallas

Small World..... Rose

Scene 5 - On Stage of a Vaudeville Theatre, Los Angeles

Baby June and Her Newsboys Baby June and Newsboys

Scene 6 – Hotel Rooms, Akron

Mr. Goldstone June, Rose, Angie, Herbie,
Tulsa, L.A., Yonkers

Little Lamb Louise

Scene 7 – Chinese Restaurant, New York

You'll Never Get Away From Me Rose, Herbie

Scene 8 – Stage of Grantziger's Palace, New York

Farm Sequence and Broadway Louise, June, Farm Boys

Scene 9 – Grantziger's Office

If Momma Was Married..... Louise, June

Scene 10 – Theatre Alley, Buffalo

All I Need Is The Girl..... Tulsa

Scene 11 - Railroad Platform, Omaha

Everything's Coming Up Roses Rose

INTERMISSION

CAST

Thomas Alderson	Farm Boy, Driver
Kathryn Ballantine	Francis, Newsboy, Waitress
Tess Benger	Balloon Girl, Marjorie May, Showgirl
Daniel Birnbaum.....	Mr. Goldstone, Bourgeron-Cochan
Kendra Braun	Louise
Jen Budgell.....	Baby June
Stacey Bulmer.....	Stage Mother, Hotel Guest, Renee (Gypsy`s maid)
Leah Cogan.....	Miss Cratchitt
Lise Cormier.....	Newsboy, Edna, Showgirl, Child Performer
Romina Cortina	Mazeppa
Caleb Cosman	Uncle Jocko, Kringelein, Stagehand
Shannon Coulter	Thelma, Showgirl, Stage Mother
Katie Edwards.....	June
Kate Etienne	Rose
Alex Fiddes	Georgie, Angie, Farm Boy
Janelle Gallant	Dolores, Showgirl, Stage Mother
Caitlin Goguen*	Tessie Tura
Anna Hurshman.....	Stage Mother, Gail, Hotel Guest, Showgirl
Kayla James.....	Louise
Ryan Jeffrey.....	Pop, Cigar, Hotel Guest
Jeremy Lapalme.....	Herbie
Colin Lepage.....	Tulsa, Farm Boy
A.J. Lopresti	Farm Boy
Lucas Meeuse.....	L.A., Farm Boy
Rebecca Peters	Baby Louise, Showgirl
Erika Santillana	Newsboy, Driver`s son, Child Performer, Agnes
Johnny Simeonakis	Yonkers, Farm Boy
Jennifer Smardenkas	Rose
Alicia Toner	Electra
Nick Visscher	Weber, Pastey, Phil